



BELLA+CANVAS
LOS ANGELES

She wears 600, Spaghetti-T with Spandex, see page 313 (108.06)



Underwear



UNDERWEAR



BELLA+CANVAS
L.A. ANGELES

985.06



- 220 gsm
- 95 % cotton 5 % spandex
- elastic band and piping in contrast colour.



985.06

S, M, L

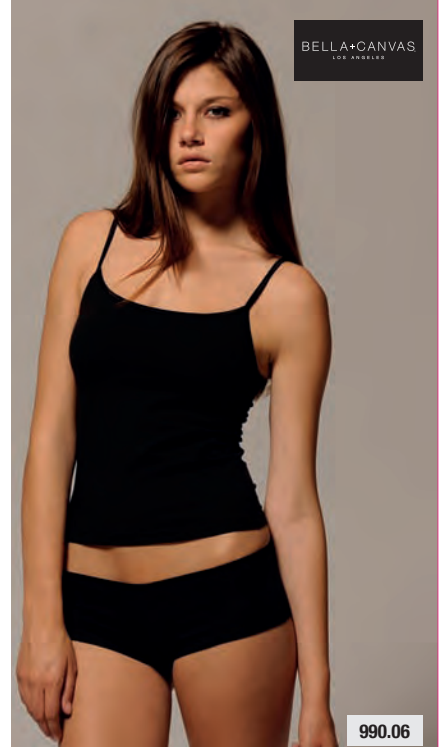
Black	Fuchsia	Red	White
White	Pink	White	Black



S - L : 24



- 220 gsm
- 95 % cotton 5 % spandex
- hipster with lined crotch
- hem trimmed with satin band.



BELLA+CANVAS
L.A. ANGELES

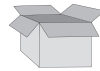
990.06

S, M, L, XL

White	Black
-------	-------

S, M, L

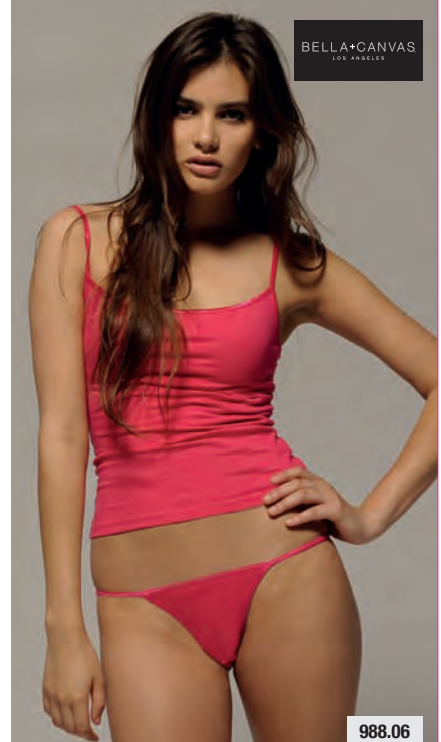
Baby Blue	Red	Pink	Fuchsia	Currant	Leaf
Turquoise	Chocolate				



S - XL : 36



- 220 gsm
- 95 % cotton 5 % spandex
- thong bikini
- hem trimmed with satin band.



BELLA+CANVAS
L.A. ANGELES

988.06

S, M, L, XL

White	Black
-------	-------

S, M, L

Red	Pink	Fuchsia	Turquoise
-----	------	---------	-----------



S - XL : 72



986.06 Low Rise String Thong 303



- 220 gsm
- 95% cotton, 5% spandex
- low rise string thong
- perfect for wearing with hipsters.



BELLA+CANVAS
L.A. ANGLES

986.06

S, M, L



S - L :36

108.06 Spaghetti-T with Spandex 600



- 220 gsm
- 95% cotton, 5% spandex
- camisole tank top
- neckline and straps trimmed with satin band.



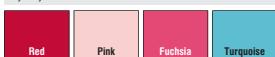
BELLA+CANVAS
L.A. ANGLES

108.06

S, M, L, XL



S, M, L



S - XL :72

097.06 Sports Bra 970

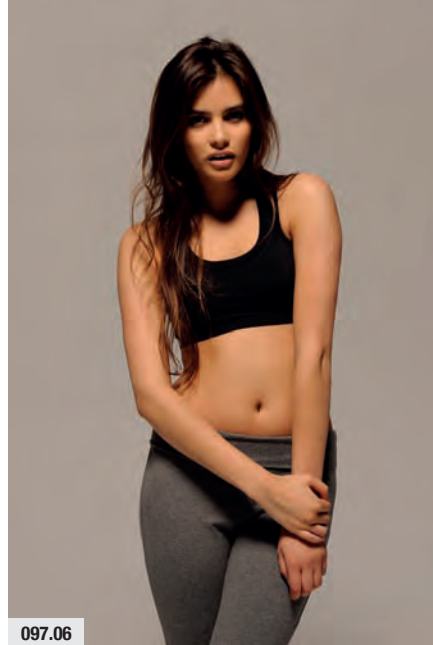


BELLA+CANVAS
L.A. ANGLES

097.06



- 225 gsm
- 90 % nylon, 10 % spandex
- racerback bra
- two layers to firm bra
- trim to neckline and shoulder/ sleeve seam.



097.06

S, M, L



S - L :36

